

Porter Valley News

The newsletter of Friends of the Porter Valley - Registered Charity No. 1069865



Issue 107



October 2022

A very special AGM

Wednesday 2nd November
7:30 - 9:30pm
Bents Green Methodist Church
Ringinglow Road



His Majesty's representative, the Lord-Lieutenant for South Yorkshire will be joining the AGM to present the Friends of Porter Valley with the Queen's Award for Voluntary Service.

We are also pleased to welcome the Lord Mayor and Lady Mayoress of Sheffield. Members will be able to book tickets from October 14th until November 1st.

Following the ceremony, there will be light refreshments and an opportunity for volunteers to circulate and meet the Lord-Lieutenant, to share with her the work they do for the FoPV.

The Queen's Award for Voluntary Service is equivalent to an MBE and is awarded for the lifetime of the organisation. It retains its title, despite the death of the late Queen Elizabeth, for whom we will observe a minute's silence during the meeting.

Ann le Sage

Conservation Work Mornings

The work mornings are increasingly popular and, on Tuesday September 27th, attracted 23 volunteers, who on a cool and sunny Autumn morning helped tidy up around Shepherd Wheel. The group worked hard clearing the ledge which runs around the dam side of all the overgrown vegetation which was over head-height in places and obscuring the view of the dam. If not removed, these large plants and trees could also damage the dam wall.

Additionally, various water-loving plants which had developed into large 'mats' spreading out into the dam were removed. One of these was so large it took four people to drag it away. The final task was to clear a drain to prevent an overflow of water into the Shepherd Wheel workshop whenever it rains.

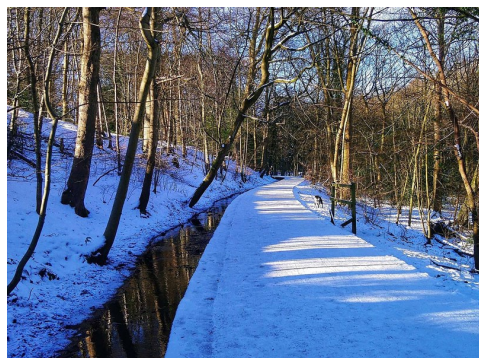
If you'd like to join us, you would be very welcome. Please use the contacts shown in the activity list at the end of this newsletter.

Lyndon Porter

Inside this issue:

Christmas Cards and Calendars	2
Introducing the Lord-Lieutenant	2
Shepherd Wheel Developments	2
Hidden Rivers Tour	3
Forge Dam	3
Christmas Stockings	4
Forge Dam Playground	4
Contact details	4
Membership details	4
Committee members	4
Activities	4

Christmas Cards and Calendars



This year's fabulous card offering features pictures of Wire Mill Goit in Whiteley Woods and a view of Porter and Mayfield farms. Packs of cards cost the same as last year: £4 for 5 or £6 for a pack of 10.

The 2023 calendar showcases the Valley in all its glory across the year and is priced at £10.

Broomhill Post Office and Foothills are selling our calendars.



You can buy cards and calendars at Endcliffe Park Café, Forge Dam Café and Le Crunch at Bents Green, or they are available online. We sold several packs to early bird Christmas shoppers at our Open Meeting in August, and plan to have both cards and calendars available at the AGM on November 2nd.



Missing gate, Porter Clough



Forge Dam just a year ago



Festival woodland



Cherry Blossom, Endcliffe Park



View across Bingham Park



Wiremill dam, dawn bird walk



Summer meadow, Mayfield valley



A line of Mandarin ducks



Woodpecker departing



Dryad's saddle fungus



Autumn walk, Endcliffe Park



Bullrushes, Forge Dam



Facebook: Friends of Porter Valley
Email: secretary@fopv.org.uk
Website: www.fopv.org.uk



Introducing the Lord-Lieutenant

The Lord-Lieutenant acts on behalf of the sovereign presenting honours and awards to individuals, voluntary groups and business organisations and encouraging charitable work and local initiatives within the county. When members of the Royal family visit, the Lord-Lieutenant arranges the visit and receives and accompanies the visitor. Dame Hilary Chapman DBE RN was appointed in November 2021 (having previously served as Deputy Lord-Lieutenant since 2016). She spent her entire career in nursing, beginning and ending her NHS work at Sheffield Teaching Hospitals Foundation Trust, where she was Chief Nurse until her retirement 4 years ago. She is an Honorary Professor at Sheffield Hallam University, an Honorary Doctor of Medicine at Sheffield University and a Fellow of the Royal College of Nursing.

If you get the opportunity to meet the Lord-Lieutenant, the correct form of address is Ma-am - rhyming with jam!

Ann le Sage

Shepherd Wheel Museum Developments

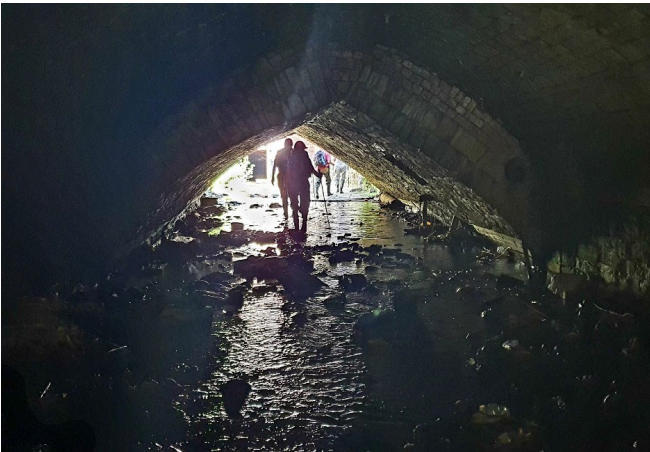
It is now 10 years since Shepherd Wheel was restored through a Lottery Fund project. It has operated via a partnership including FoPV, Sheffield Museums and Sheffield City Council, the Council owning the site while the Museums Trust employ water engineers and host educational visits. FoPV provide volunteers to greet weekend and Bank Holiday visitors; over 600 volunteer hours in the past year alone.

Inevitably, time has inflicted wear and tear on the fragile structures and the partnership has launched a review to consider future management and repair needs to safeguard the museum's future. Watch this space.

Ann le Sage

Hidden Rivers Tour

In July a group of us signed up for a tour of the River Porter and Sheaf. You might think that is relatively uninteresting as we are able to walk along the river quite easily in our 'patch'. However, this was along the predominantly underground sections that are common along the 'patch' that our friends at the Sheaf & Porter Rivers Trust call theirs. Once the river Porter has passed beyond Hunters Bar it is heavily culverted as a result of various industries that developed along that stretch. There are a few open areas but most are now covered as the river flows under all the shops such as Waitrose and Decathlon.



We joined the river at the new pocket park at Matilda Street, part of the flood defence solution developed after the 2007 floods. We found ourselves almost immediately underground and many of us ended up crawling under Radio Sheffield and The Leadmill before emerging beside the station car park. Some of these culverts are many hundreds of years old and you can see as you make your way along where the culvert has been extended as the industrialisation progressed in this part of the city. One 'arch' is more of a triangle as you can see in this picture.

As we passed the car park we descended under the station and eventually met the Sheaf under platform 5. This was specifically culverted to build Midland Station and, as we walked along this stretch, we could hear the trains arriving and leaving overhead.

There is one final open section after the station beside the Electric Works and then it's underground all the way until it meets the Don at Blonk Street. We didn't quite get to the Don as the river gets too deep, however we got as far as the Megatron, a huge chamber underneath what is now Castlegate car park. There were plenty of interesting artefacts to see along this section, including old crucibles that had been discarded in the river from nearby forges, and unfinished cutlery that for whatever reason failed some form of quality control.



To find out more about the Sheaf & Porter Rivers Trust, see their website www.sheafportertrust.org where there are details of future tours.

Mike Halliwell

Forge Dam

Two items of outstanding works have now been substantially completed. These are the repair and reconstruction of the pond wall on the north side and the installation of a control penstock on the goit that feeds water to the wheel pit behind the cafe.

As I write another contractor has commenced work on a range of items to improve access around Forge Dam. This will include digging out damaged surfacing and laying new tarmac in the north and west side of the pond. The benches will be reinstated on new plinths, handrails will be replaced and the area of the old boathouse will be tidied up. Some resurfacing of the bridgeway will be carried out including the area near the "horse hop" and finally the contractor's compound near the pond inlet will be cleaned up and reinstated.

David Young

Secretary:
Glynis Jones
25 Endcliffe Rise Road
S11 8RU

Tel 2668332
secretary@fopv.org.uk

Annual Membership:

Single: £10
Family: £15
Concession: £5

Membership forms
available from
David Young
(tel. 2307909)
or on our website

Something that's the same price as last year! (and the year before)

Yes, our Freddo-packed tiny Christmas stockings, created by FoPV's band of busy knitters, will be appearing in an outlet near you shortly (Forge Dam cafe, Endcliffe Park Cafe and Natures Way at Fulwood) Still priced at £2, they are cute and recyclable for years on the family Christmas tree. Or you can wrap a couple of £5 pound notes (remember those?) round the chocolate, for the teenager in your life who only wants hard cash for Christmas.

If you know of any friendly shopkeepers happy to give counter space to a small tray of our stockings, please let us know via Ann Greenwood tel 2630776. We'd love to add to our faithful and supportive group of retailers.

Ann Greenwood

Forge Dam Playground improvements

As the Forge Dam project nears completion, we can give time and attention to the surrounding area, in particular the heavily used Playground, felt by many to be in need of a major refresh. In early September, Ann Le Sage and fellow Trustee Glyn Mansell met informally with parents and grandparents accompanying youngsters using the equipment and collated a list of issues raised.

Following on-site discussions with council officers, a systematic consultation by QR code was launched via the FoPV website (receiving 170 responses in the first week!) Three specialist playground companies have been approached for suggestions and a fundraising system has been launched on the website. We welcome money raising initiatives from other groups and individuals too.

All proceeds from Christmas sales (cards, calendars etc.) will go toward the renovation of the playground, so please donate and spend!

Ann Le Sage

Activities for October to February

Any changes in the following details will be available on the website

When and Where	What and Who
Tuesday 25 th October, 10 am	Conservation work morning Prior booking essential - see below
Wednesday 2 nd November, 7.30 pm Bents Green Methodist Church Hall	AGM and Presentation of Queen's Award for Voluntary Service by the Lord-Lieutenant*
Thursday 10 th November, 10 am	Conservation work morning Prior booking essential - see below
Saturday 12 th November, 10 am	Tiptoe through the Toadstools* A walk led by Ziggy Senkans
Tuesday 22 nd November, 9.30 am – 12.30 Forge Dam Café	Wreath making demonstration and sales of kits
Tuesday 22 nd November, 10 am	Conservation work morning Prior booking essential - see below
Saturday 10 th December, 10 am – 3 pm Forge Dam Café (times tbc)	Christmas pop-up sales
Sunday 11 th December, 10 am – 3 pm Forge Dam Café (times tbc)	Christmas pop-up sales
Thursday 12 th December, 10 am	Conservation work morning Prior booking essential - see below
Thursday 8 th January, 10 am	Conservation work morning Prior booking essential - see below
Tuesday 24 th January, 10 am	Conservation work morning Prior booking essential - see below
Wednesday 1 st February, 7.30 pm Bents Green Methodist Church Hall	Open Meeting and talk tba

Conservation work mornings: prior booking essential – for details and booking, please contact Dave Clegg orielclegg@aol.com or Lyndon Porter lyndon@the-porters.me.uk or via our website FOPV.org.uk

*Walks and AGM: These are ticket events – for details and registration, visit our website. Registration for walks opens two weeks before the walk on the 'walks' page. For AGM, registration 14 Oct - 1st Nov.

The Committee:

Ann Le Sage
Chair / talks
David Young
Treasurer
Glynis Jones
Secretary / newsletter
Dave Clegg
Conservation / planning
Les Greenwood
Newsletter
Mike Halliwell
Website / membership
Glyn Mansell
FD playground project
Chris Nicholson
Nature recording
Rob Peck
Safety officer
Lyndon Porter
Conservation / walks